

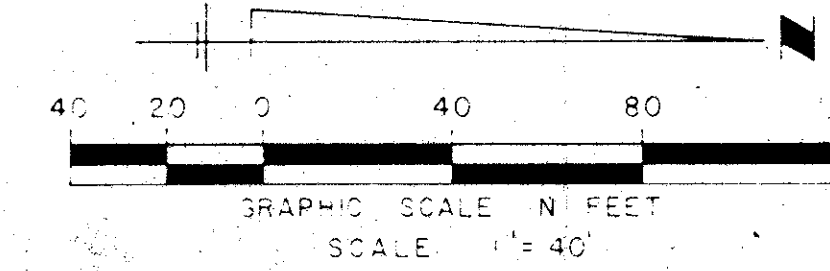
PLAT No. 11A EASTPOINTE SUBDIVISION

177

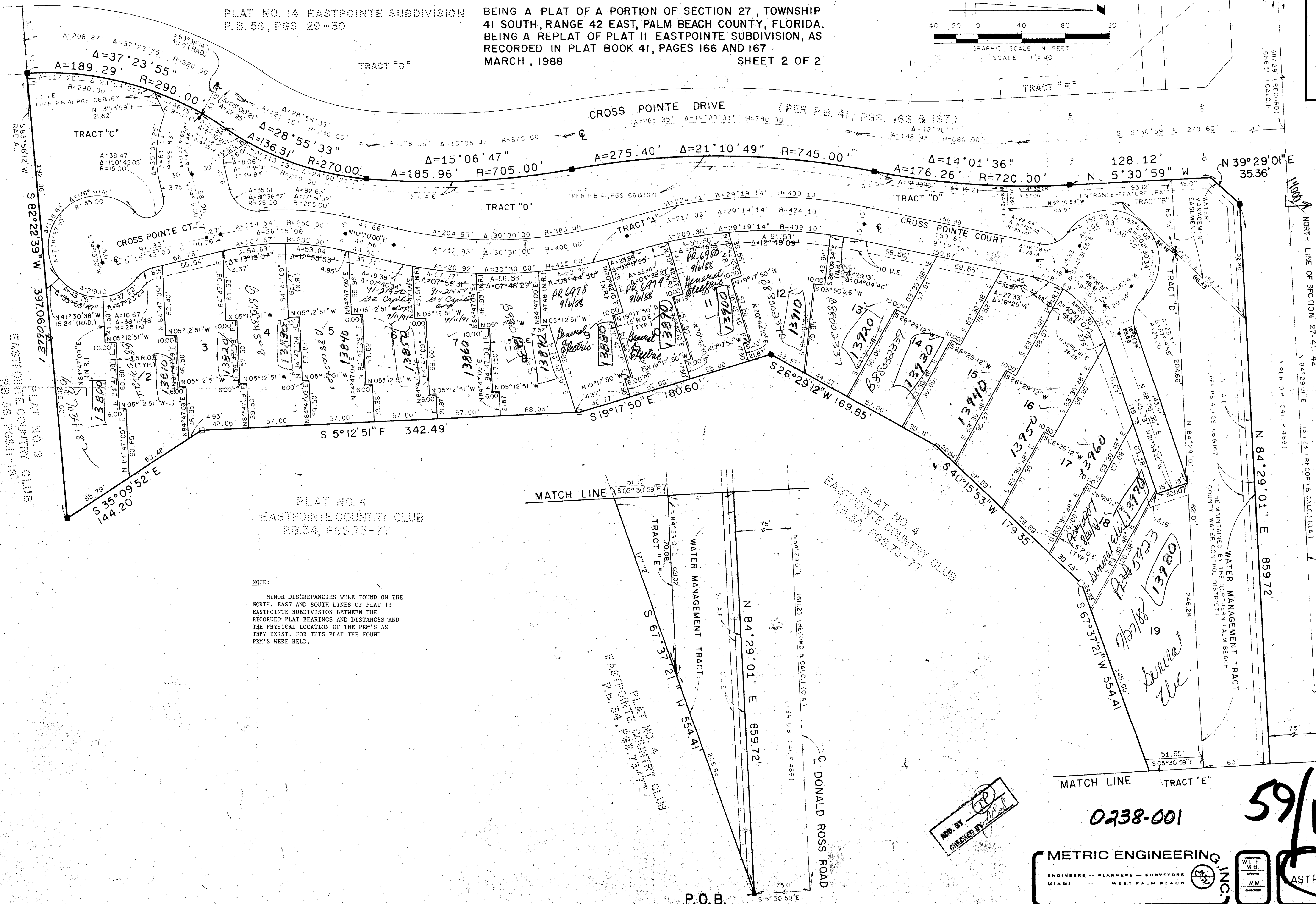
(A PLANNED UNIT DEVELOPMENT)

PLAT NO. 14 EASTPOINTE SUBDIVISION
P.B. 58, PGS. 25-30

BEING A PLAT OF A PORTION OF SECTION 27, TOWNSHIP
41 SOUTH, RANGE 42 EAST, PALM BEACH COUNTY, FLORIDA,
BEING A REPLAT OF PLAT II EASTPOINTE SUBDIVISION, AS
RECORDED IN PLAT BOOK 41, PAGES 166 AND 167
MARCH, 1988 SHEET 2 OF 2



P.O.C.
N.W. CORNER
SEC. 27/41/42



PLAT NO. 4
EASTPOINTE COUNTRY CLUB
PGS. 4, PGS. 73-77

NOTE:
MINOR DISCREPANCIES WERE FOUND ON THE
NORTH, EAST AND SOUTH LINES OF PLAT 11
EASTPOINTE SUBDIVISION BETWEEN THE
RECORDED PLAT BEARINGS AND DISTANCES AND
THE PHYSICAL LOCATION OF THE PRM'S AS
THEY EXIST. FOR THIS PLAT THE FOUND
PRM'S WERE HELD.

2/14/14
SUBDIVISION * Eastpointe # 11A
BOOK 59
PAGE 177
FLOOD MAP * 15B
FLOOD ZONE
ZONING RE
QUAD # 27
SE
PUD NAME
QUB

APP. BY
CHECKED BY

METRIC ENGINEERING, INC.
ENGINEERS - PLANNERS - SURVEYORS
MIAMI - WEST PALM BEACH

PLAT No. 11A
EASTPOINTE SUBDIVISION
SHEET 2 OF 2

0238-001

59/177

Pt. 80-28